



Brambles
and
Bindweed

Moorland Faroese Shawl



Inspired by the colour pack of wool from Attic24 this big snuggly shawl is all about the colour. Wrap yourself in fifteen different colours, all working together to capture the essence of a summer day on the heather clad Yorkshire hills. The shawl is knit from the top down and includes several shoulder shaping rows to give the unique Faroese shape.

Techniques:

Provisional cast on, garter tab, various single and double increases and decreases including yarn over, knitting through the back loop, purl and slip stitches.

Measurements:

230cm (90.5 inch) wide and 140cm (55 inch) deep, after blocking.

Materials:

Yarn

Stylecraft Special DK [100% acrylic; 295m (322 yds) per 100g ball. Colours and amounts are specified in pattern notes.

Needles

1 set 5mm (US8) circular needle, length 100cm (40 inch).

Either 1 set 4mm (US6) circular needle (length not critical) or 4mm (US 6) double pointed needles.

Notions

4 stitch markers.

Yarn needle for weaving in ends.

Blocking wires and pins.

Tension:

18 stitches and 22 rows over 10cm in rosette stitch on 5mm needles after blocking.

Contact me:

bramblesandbindweed@gmail.com

Find me:

www.bramblesandbindweed.com

www.facebook.com/bramblesandbindweed

www.instagram.com/bramblesandbindweed

Pattern notes:

Yarn choice

1 Attic24 moorland yarn pack, available from [Wool Warehouse](#). Below are listed the approximate amounts you will need of each colour:

Lime	15g	45m
Khaki	30g	90m
Walnut	35g	105m
Grape	40g	120m
Meadow	40g	120m
Mocha	40g	120m
Cloud Blue	45g	135m
Plum	50g	150m
Pistachio	50g	150m
Cypress	50g	150m
Violet	55g	165m
Wisteria	60g	180m
Duck Egg	65g	195m
Sage	65g	195m
Storm Blue*	100g	295m

*the border is very tight on yarn, if you are a loose knitter consider completing the border in a smaller needle size.

You are of course welcome to substitute any yarn of your choice.

Abbreviations:

g-st garter stitch, **k** knit, **k2tog** knit 2 stitches together, **k3tog** knit 3 stitches together, **k2tog-tbl** knit 2 stitches together through the back loop, **kfb** knit into the front and back of the same stitch, **kyok** knit, yarnover and knit into the same stitch to make 3 stitches from 1, purl into the back loop of the yarn over on the return row, **p** purl, **PM** place marker, **SM** slip marker, **RS** right side, **sl wyif** slip 1 stitch purlwise with yarn at front, **st(s)** stitch(es), **WS** wrong side, **yo** yarn over.

Pattern Starts:

Garter st

Knit all rows.

Rosette st

Row 1: (RS) Knit.

Row 2: (WS) Purl 2 sts together but do not drop from main needle, k the same two sts together again and slip from the main needle (2 sts have remained as 2 stitches). Repeat to end of row.

Rows 1 and 2 set rosette st pattern.

Garter tab

Using 5mm needles (US 8) and cypress yarn, provisionally cast on 5 st using your favourite method.

Work 36 rows in g-st.

Change yarn to lime.

Set up row: K5, pick up 3 st from g-st ridges on long side, (yo, miss a ridge then pick up st from following ridge) three times, (pick up st from next ridge, then miss a ridge, yo) three times, pick up 3 sts from g-st ridges on long side, k5 from provisional cast on. (28st)

Foundation row: K5, PM, p2, PM, p14 PM, p2, PM, k5.

Shawl body

Work colours as given below; each colour is worked for two rows.

1st row: (RS) K5, SM, yo, work rosette st to next PM, yo then SM, work appropriate row of Central Panel chart, PM, yo, work rosette st to next PM, yo then SM, k5.

2nd row: K5, p1 into yo of previous row, work rosette st to next yo of previous row, p1 into yo of previous row, p to next PM, p1 into yo of previous row, work rosette st to yo of previous row, p1 into yo of previous row, k5.

Repeat rows 1 and 2 throughout the shawl. Additional shaping is added on row 35 and 77.

You may wish to check your stitch count before beginning the border.

You should have 1042 stitches on your final row, though any multiple of 12 +10 will work. You can use the last return row to adjust stitches if necessary.

Shoulder shaping rows

35th row: K5, yo, k2 (k2, kfb) 10 times, k4, yo, k18, yo, k2 (k2, kfb) 10 times, k4, yo, k5.

77th row: K5, yo k3 (k3, kfb) 20 times, k5, yo, work chart A row 77, yo, k3 (k3, kfb) 20 times, k5, yo, k5.

Adding border

Using 4mm (US6) needles and storm blue cast on 13sts.

1st row: K12, with RS of shawl facing knit last st of border and first st of shawl together through the back loop.

2nd row: Sl wyif, k11, k1-tbl.

Repeat rows 1-2 four more times.

11th row: Starting with row 1 work Edging chart.

Repeat Edging chart a further 85 times.

Next row: As 1st row.

Next row: As 2nd row.

Repeat rows 1-2 a further four times.

Cast off all stitches. Weave in ends.

Finishing:

The shawl will need to be steam blocked as the yarn is 100% acrylic and requires heat to set the stitches. Pin out the shawl to the required dimensions, then hover the iron/steamer about 2cm (1 inch) above the shawl, but do not let it touch as too much heat will irreparably damage the yarn.

Colours for rows

Row Colour

1	Khaki	39	Lime
3	Meadow	41	Walnut
5	Pistachio	43	Cypress
7	Mocha	45	Meadow
9	Walnut	47	Khaki
11	Lime	49	Lime
13	Meadow	51	Walnut
15	Khaki	53	Mocha
17	Lime	55	Khaki
19	Pistachio	57	Grape
21	Cypress	59	Walnut
23	Walnut	61	Sage
25	Lime	63	Plum
27	Grape	65	Grape
29	Pistachio	67	Meadow
31	Meadow	69	Plum
33	Khaki	71	Violet
35	Mocha (shoulder shaping row)	73	Sage
37	Grape	75	Walnut
		77	Mocha (shoulder shaping row)
		79	Plum
		81	Violet
		83	Khaki
		85	Mocha
		87	Meadow
		89	Plum
		91	Violet
		93	Cypress
		95	Mocha
		97	Walnut
		99	Violet
		101	Meadow
		103	Cypress
		105	Plum
		107	Violet
		109	Khaki
		111	Mocha
		113	Plum
		115	Sage
		117	Walnut
		119	Grape
		121	Violet
		123	Plum
		125	Wisteria
		127	Grape
		129	Sage
		131	Pistachio
		133	Mocha
		135	Plum
		137	Wisteria
		139	Cypress
		141	Khaki
		143	Grape
		145	Wisteria

147 Cypress
 149 Pistachio
 151 Sage
 153 Violet
 155 Grape
 157 Wisteria
 159 Cypress
 161 Pistachio
 163 Sage
 165 Wisteria
 167 Violet
 169 Meadow
 171 Sage
 173 Duck egg
 175 Pistachio
 177 Sage
 179 Duck egg
 181 Pistachio
 183 Cloud
 185 Duck egg
 187 Cloud
 189 Duck egg
 191 Wisteria
 193 Cloud
 195 Duck egg
 197 Wisteria
 199 Cloud
 201 Duck egg
 203 Cloud

Chart and Written Instructions:

Written Instructions

Central Panel

All WS rows are purl.

Any RS rows not specified are knit.

Rows 1,5,9,13 (RS): Kyok, yo, k2tog 6 times, yo, kyok. (14 sts)

Row 15: Kfb, k12, kfb. (16 sts)

Rows 17,21,25,29: Kfb, yo, k1, yo, k2tog 6 times, yo, k1, yo, kfb.

Row 31: Kfb, k14, kfb. (18 sts)

Rows 33,37,41,45: (K1, yo) 3 times, k2tog 6 times, (yo, k1) 3 times.

Row 47: Kfb, k16, kfb. (20 sts)

Rows 49,53,57,61: K2, (yo, k1) twice, yo, k2tog 6 times, (yo, k1) twice, yo, k2.

Row 63: Kfb, k18, kfb. (22 sts)

Rows 65,69,73,77: K2tog, (yo, k1) 3 times, yo, k2tog 6 times, (yo, k1) 3 times, yo, k2tog.

Row 79: Kfb, k20, kfb. (24 sts)

Rows 81,85,89,93: K2tog, (k1, yo) 4 times, k2tog 6 times, (yo, k1) 4 times, k2tog.

Row 95: Kfb, k22, kfb. (26 sts)

Rows 97,101,105,109: K3tog, (yo, k1) 4 times, yo, k2tog 6 times, (yo, k1) 4 times, yo, k3tog.

Row 111: Kfb, k24, kfb. (28 sts)

Rows 113,117,121,125: K3tog, (k1, yo) 5 times, k2tog 6 times, (yo, k1) 5 times, k3tog.

Row 127: Kfb, k26, kfb. (30 sts)

Rows 129,133,137,141: K1, k3tog, (k1, yo) 5 times, k2tog 6 times, (yo, k1) 5 times, k3tog, k1.

Row 143: Kfb, k28, kfb. (32 sts)

Rows 145,149,153,157: K3tog, k2tog, (yo, k1) 5 times, yo, k2tog 6 times, (yo, k1) 5 times, yo, k2tog, k3tog.

Row 159: Kfb, k30, kfb. (34 sts)

Rows 161,165,169,173: K2tog 3 times, (yo, k1) 5 times, yo, k2tog 6 times, (yo, k1) 5 times, yo, k2tog 3 times.

Row 175: Kfb, k32, kfb. (36 sts)

Rows 177,181,185,189: K1, k2tog 3 times, (yo, k1) 5 times, yo, k2tog 6 times, (yo, k1) 5 times, yo, k2tog 3 times, k1.

Row 191: Kfb, k34, kfb. (38 sts)

Rows 193,197,201: K2, k2tog 3 times, (yo, k1) 5 times, yo, k2tog 6 times, (yo, k1) 5 times, yo, k2tog 3 times, k2.

Edging

Row 1 (RS): Sl wyif, (k1, yo) twice, k2tog, yo, k2tog, k1, k2tog, yo, k2, k2tog-tbl. (14 sts)

Row 2 (WS): Sl wyif, k2tog, yo, k10, k-tbl.

Row 3: Sl wyif, k1, yo, k3, yo, k2tog, yo, k2tog twice, yo, k2, k2tog-tbl. (15 sts)

Row 4: Sl wyif, k2tog, yo, k11, k-tbl.

Row 5: Sl wyif, k1, yo, k5, yo, k2tog, yo, k3tog, yo, k2, k2tog-tbl. (16 sts)

Row 6: Sl wyif, k2tog, yo, k12, k-tbl.

Row 7: Sl wyif, k2tog, yo, k2tog, k1, (yo, k2tog) twice, k1, k2tog, yo, k2, k2tog-tbl. (15 sts)

Row 8: Repeat row 4.

Row 9: Sl wyif, k2tog, yo, k1, k2tog, yo, k2tog, k2, k2tog, yo, k2, k2tog-tbl. (14 sts)

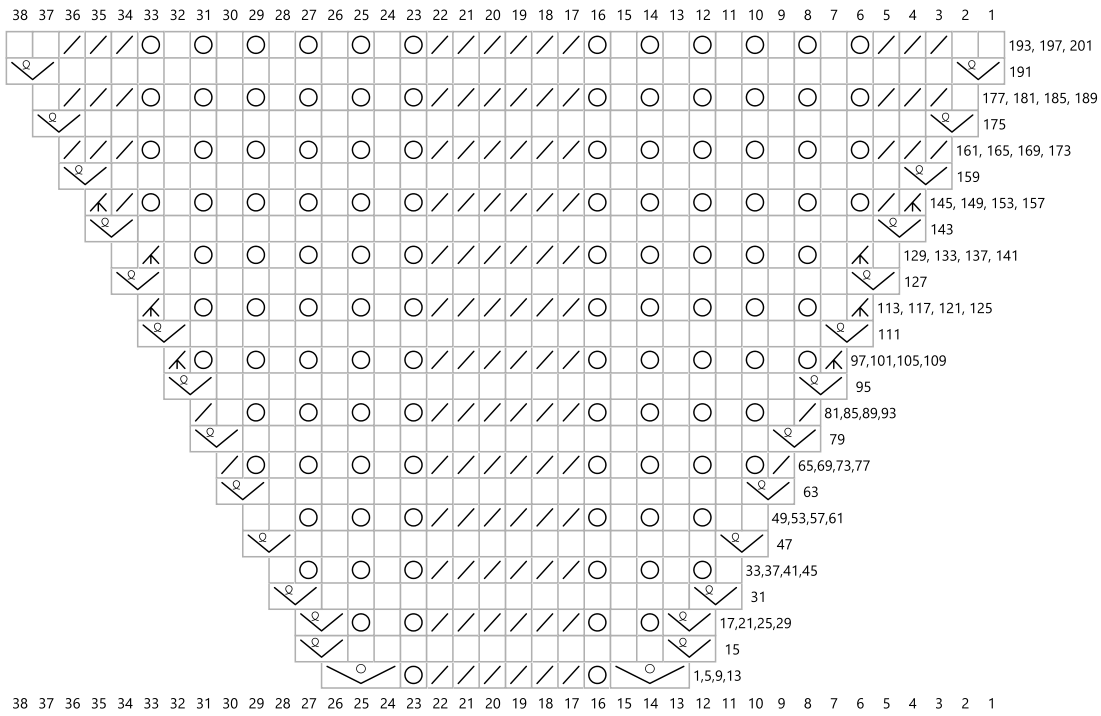
Row 10: Repeat row 2.

Row 11: Sl wyif, k2tog, yo, k3tog, yo, k3, k2tog, yo, k2, k2tog-tbl. (13 sts)

Row 12: Sl wyif, k2tog, yo, k9, k-tbl.

Central Panel

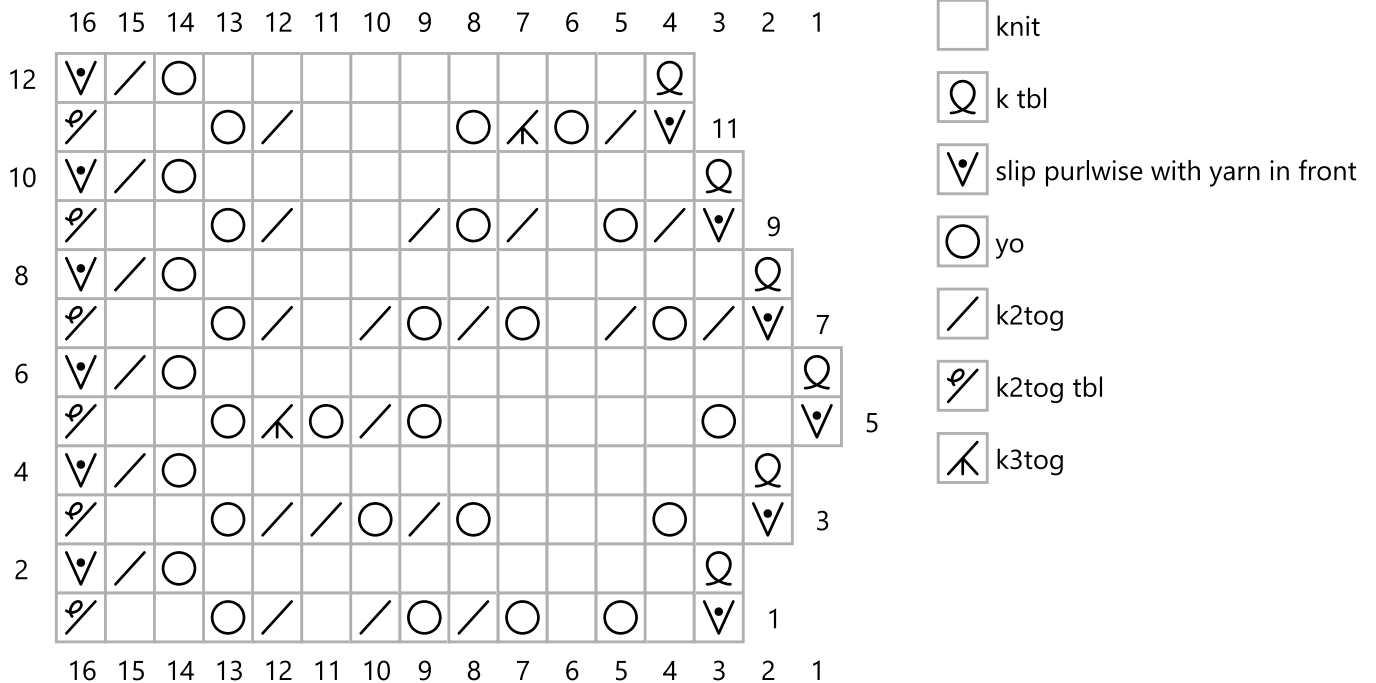
Key



For the central panel chart:
 All WS rows are purl.
 Any RS rows not specified are knit.

Edging

Key



The edging is worked in g-st throughout.